

WHO IS RYCO FILTERS?

OUR HISTORY



- Established in 1936
- Market leading filtration brand
- Renowned and respected for quality and integrity
- Superior Efficiency, Life & Flow
- Strong identifiable part numbers and packaging and part numbering
- “The Professional’s Choice”



RYCO
FILTERS
THE PROFESSIONALS CHOICE



THE RYCO DIFFERENCE

WHEN YOU SPECIFY RYCO, YOU GET MUCH MORE THAN A QUALITY FILTER

OUR STRENGTH: OUR LABORATORY

TEST AND DELIVER




- Australia's only dedicated Filtration Laboratory
- State of the art multi pass test machine
- Testing & validation to international standards
- Onsite R&D maintaining our OE quality spec
- Based in Melbourne at GUD HQ
- Stringent testing is based on SAE and ISO standards



RYCO
FILTERS

EFFICIENCY, LIFE & FLOW



	A superior performing oil filter	A poor performing oil filter
Efficiency 	Prevents damage to the engine's bottom end, including bearings and crankshaft.	Poor efficiency = high engine wear.
Life 	Long life = engine protected for the entire service interval.	Short life = high engine wear.
Flow 	Improved flow = reduced risk of oil starvation enhancing engine protection.	High filter restriction starves the engine of oil flow at low RPM = rapid bearing wear.

Ryco has developed a reliable industry standard for automotive filtration in three critical areas: ELF



RYCO
FILTERS

THE RYCO BRAND



Oil Filters



Air Filters



FireGuardian
Air Filters



Performance
Air Filters



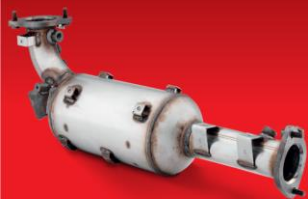
Cabin Air Filters



Fuel Filters



Syntec Oil Filters



DPF's



Tools and
Accessories



Oil Filter Caps



Transmission
Filters



Service Kits



Fuel Water
Separator Kit

**SAY 'YES'
TO MORE
CUSTOMERS**

RYCO
FILTERS

RYCO
FILTERS

RYCO

SERVICE TOOLS

RYCO TOOLS & ACCESSORIES
offer a handy & convenient solution for
every day filter servicing requirements.

For more information visit www.rycofilters.com.au or follow us on Facebook



RST300

Flexi Funnel

Flexible for hard to reach oil filter drains

Suitable for a range of fluids including oil
and transmission fluid

Easy to clean: simply wipe with clean cloth.



RST301

Transmission pan gasket fitment tool set

For aligning the transmission gasket to the pan
for easier fitment.

Kit Includes:

4 x 6mm Pins,
4 x 8mm Pins,
Instruction Sheet



**Saves
Labour
Time**



RFA303

Sump Plugs

Replace this single use plug every oil filter change
and this small accessory may save time looking for
unnecessary leaks.



RST100

In-Tank Fuel Filter Removal Kit

Takes the challenge out of achieving the exact pressure and placement required when fitting any type of in-tank filter in TOYOTA applications.

Kit Includes:

1 x Master Tool,
4 x Attachments (4x8).



RST101

In-Tank Removal Tool Extension Legs

Additional leg extension accessory for the removal of in tank fuel filters on HONDA vehicles using the RST100 tool.

Includes:

4 x attachments (6x12).



RST102

In-Tank Removal Tool Extension Legs

For applications where the in-tank fuel filter is located in a deep recess. EG. Honda Jazz
Additional extension legs used in conjunction with RST100 tool to extend the combined reach of the RST100 and RST101 legs.

Includes:

4 x attachments



RST103

Hyundai/Kia In-Tank Kia

Takes the challenge out of removing and fitting most Hyundai/Kia In-Tank Fuel filters evenly exerting the correct pressure on the locking ring.

Includes:

4x attachments to be used with RST100 main tool (suits pin hole type of locking ring),
1x main tool (suits locking ring with fin pattern).



RYCO Catch Can RCC350



RYCO
FILTERS

RYCO

RYCO
FILTERS
TRAINING ACADEMY

RYCO CRANKCASE FILTRATION SYSTEM



NEW PROGRAM

RYCO vs. M&H Comparison

Feature	Ryco Benefits	Competitor
Flexible orientation inlet and outlet ports	Makes it easier to fit to any engine bay and most mounting positions Multiple port orientation combinations	Claim to have 360 degree flexibility but is not possible with the design Has fixed ports
310 ml storage sump	Less frequent drainage intervals Oil won't tip back into engine as other units can do Designed to operate demanding off road driving conditions	155ml sump. More regular servicing required In certain driving conditions the oil will tip back into the intake system
Quick release universal mounting bracket design	Lifts on and off the bracket without tools Awkward installation positions are not a problem	Requires tools to remove
Easy to use drain tap	Can be left open or closed (closed position recommended)	Just a hole
4 lid screws	Creates an even clamping force to seal the unit Makes the unit stronger Allows for different orientation of the outlet port (if required) Ensures correct compression to seal the filter seal Stops blow by gasses getting past the filter	Screw on/off service lid. Relies on being screwed on properly to seal the unit
High efficiency oil vapour coalescing filter media	Ryco elements are interchangeable with M+H alternatives	High efficiency oil vapour coalescing filter media
Suitable for a wide range of applications	Suitable for engines up to 350kW producing up to 240 lpm of blow by gas volume	Provent 200 rated @ 200 lpm
Efficiency	97%	90%
Designed and engineered by Ryco	Designed and engineered in Australia	Designed and engineered in Germany

RYCO
CRANKCASE



1 Integrated check valve (closes @ -5kPa)

2 4 lid screws

- Makes the unit stronger
- Allows for different orientation of the outlet port (if required)
- Ensures correct compression to seal the filter seal
- Stops blow by gasses getting past the filter

3 Flexible orientation outlet port (size 1")

- Easier to fit to any engine bay and most mounting positions
- Multiple port orientation combinations

4 High efficiency oil vapour coalescing filter media

- Elements are interchangeable with aftermarket alternative
- Filters down to 1 micron
- Prevents captured oil from entering the engine

5 Intergrated by pass valve (opens @ +5kPa)

6 310 ml storage sump

- Less frequent drainage intervals
- Oil won't tip back into engine as other units can do
- Designed to operate in demanding off road driving conditions

7 Flexible orientation inlet port

8 Quick release universal mounting bracket design

- Lifts on and off the bracket without tools
- Awkward installation positions are not a problem

9 Easy to use drain tap (size 8mm)

- Can be left open or closed (Closed position recommended)

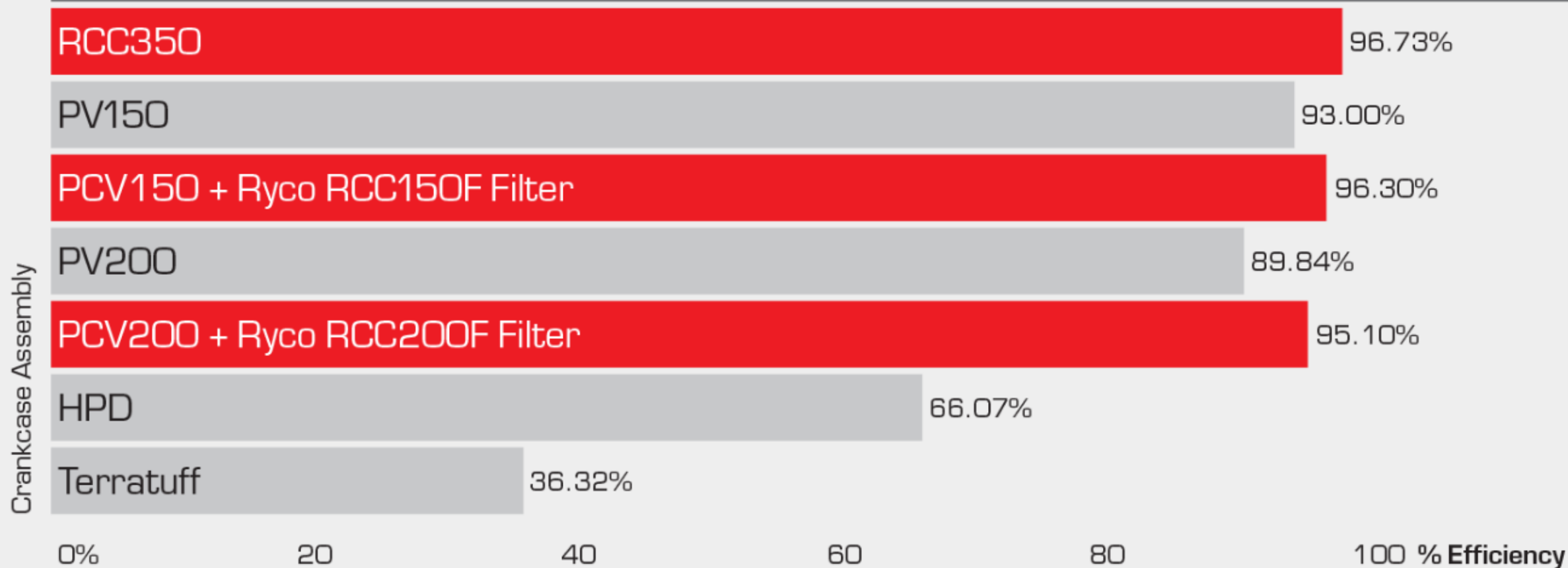
Suitable for a wide range of applications

- Suitable for engines up to 350kW producing up to 240 l/min of blow by gas flow
- Prevents premature maintenance to the intake system
- Carefully controls crankcase air flow to allow correct engine PCV operation

Designed and engineered by Ryco in Australia

- Tested to ISO 17536
- Tested to Ryco specification TS17

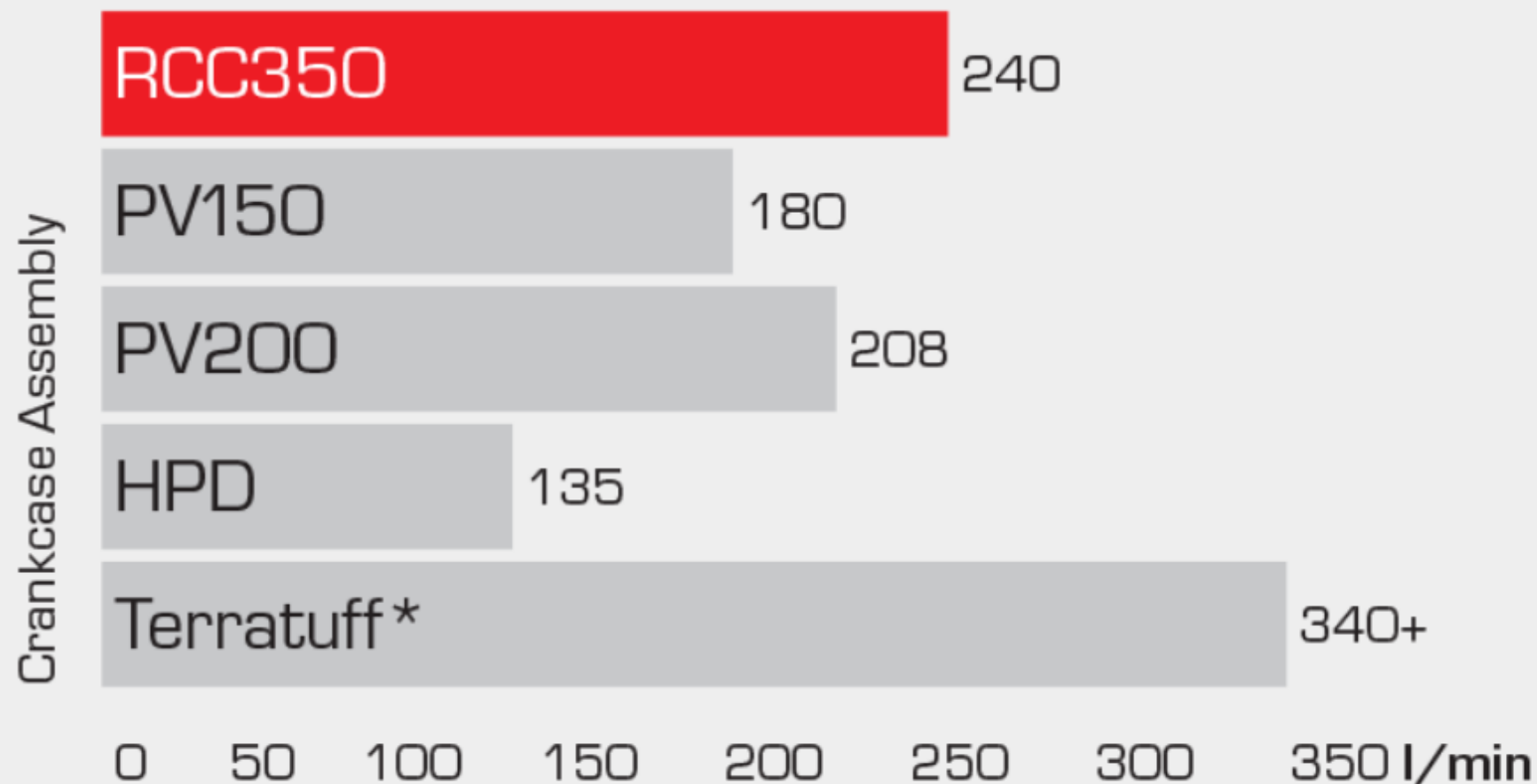
Crankcase Efficiency Test ISO17536-2:2017



Ryco Filters. RCC350 - Aerosol separator performance test for internal combustion engines. Ryco Engineering. Melbourne: Ryco Filters, 2018. Penrite HPRO OW-30 engine oil at 130°C, 100L/min gas flow. ISO17536-2:2017 Road vehicles - Aerosol separator performance test for internal combustion engines - Part 2: Laboratory test method

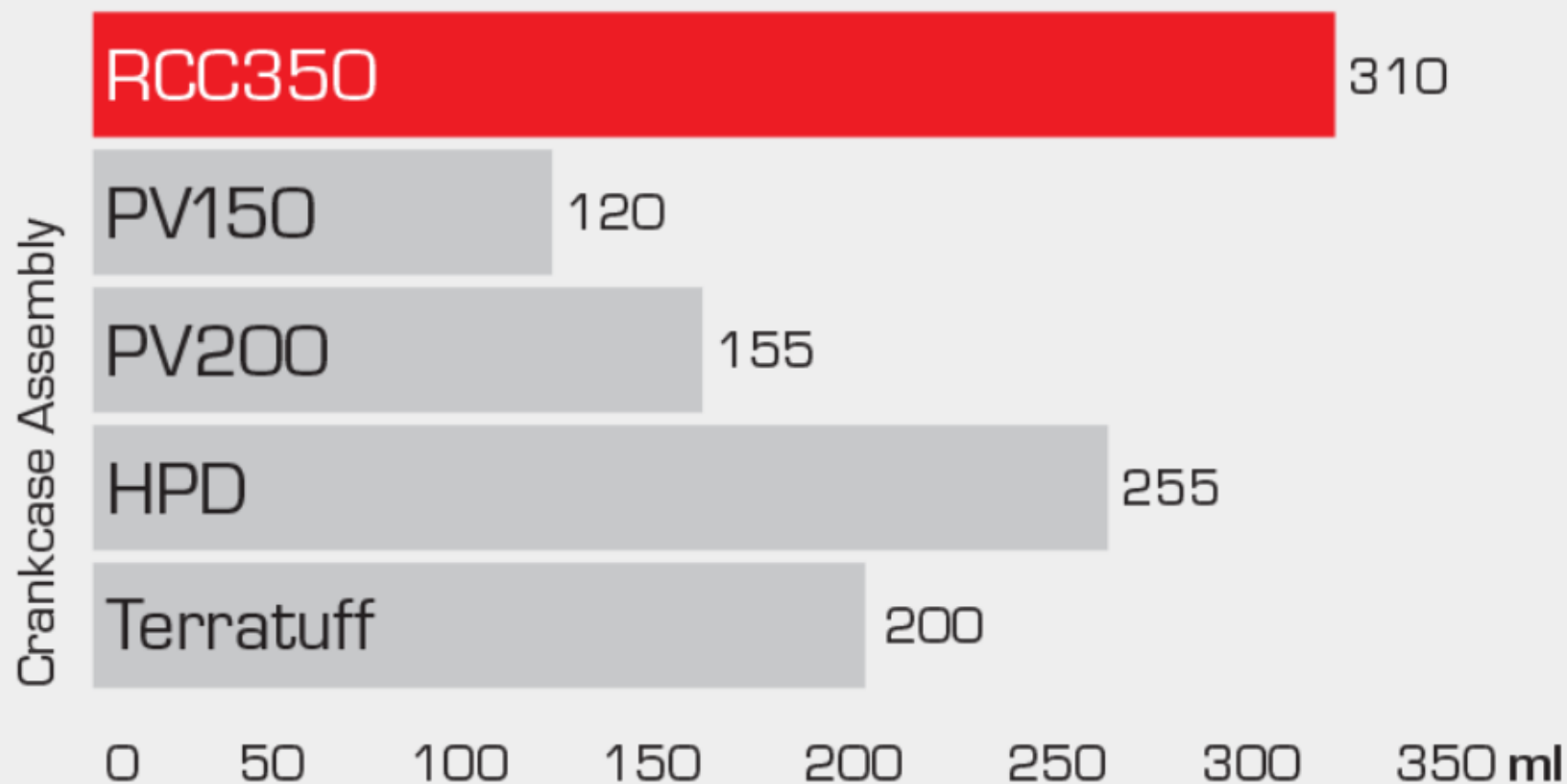
Crankcase Gas Dry Flow Comparison Test

Gas Flow (dry filter) l/min@3kPa



Crankcase Measured Internal Capacity Comparison

Internal Capacity (ml)



RYCO CRANKCASE ELEMENT FEATURES & BENEFITS

- ✓ 40,000 service interval
- ✓ High efficiency coalescing media
- ✓ Filters down to 1 Micron Rating
- ✓ Prevents captured oil from entering the engine air intake system
- ✓ Prevents premature maintenance to the intake system
- ✓ Carefully controls crankcase air flow to allow correct engine PCV operation
- ✓ Capable of handling up to 240l/min of blow by gas flow, suitable for engines up to 350kW
- ✓ Test based on ISO 17536 and tested to Ryco Specification TS17



ENGINEERED BY RYCO FOR
OPTIMUM ENGINE PROTECTION

- ✓ High efficiency coalescing media
- ✓ Provides optimal oil separation
- ✓ Removes other contaminants from the crankcase emissions down to 1 micron
- ✓ Keeps the EGR valve clean
- ✓ Can extend DPF life
- ✓ Tested to ISO17536 and Ryco Specification TS17

RYCO
CRANKCASE

RYCO CRANKCASE FILTRATION SYSTEM

RCC350

Ryco Crankcase Filter Assembly

Contains: 1 x RCC350 assembly with RCC150F element and mounting bracket.



RCC350K

Universal Crankcase Filter Kit

Contains: RCC350 assembly with RCC150 element, hose reducer, drain hose, drain hose clamp, hose clamps, mounting bracket, zip ties, instruction sheet, flange nuts and washers and service sticker.

RCC150F

Replaceable element for Ryco Crankcase Ventilation System RCC350, Interchangeable with LC7201x



RCC200F

Ryco Crankcase Filter Element. Interchangeable with LC5001x.



Part numbers are similar to M&H for easy interchange

RYCO
CRANKCASE



Double click image to activate Youtube

RVSK100

**Toyota Hilux KUN 16 & 26, 1KD,
2005-2015
VOR 293,892**



RVSK101

**Ford Ranger PX, Everest and Mazda
BT-50, 2.2L-3.2L, 2011-2018
VOR 264,936**



RVSK106

**Toyota Landcruiser VDJ 70 Series,
1VD-FTV, 2007-2018
VOR 87,026**



OCTOBER 2019 RELEASE PART NUMBERS

RVSK100

**Toyota Hilux KUN 16 & 26, 1KD,
2005-2015**



RVSK101

**Ford Ranger PX, Everest and Mazda
BT-50, 2.2L-3.2L
2011-2018**



RVSK106

**Toyota Landcruiser VDJ 70 Series,
1VD-FTV, 2007-2018**





RVS100
Toyota Hilux KUN 16 & 26, 1KD,
2005-2015

RVS100 Kit Contents



Mounting Bracket

RCC350 Crankcase Assembly Accessories Included



PCV Hose with Heat Shield

Hose Clamps

PCV Hose

Drain Valve

Nylon Bracket

Z980SK Fuel Water Separator Accessories Included



Quick Connectors

Fuel Hose with Heat Shield

Hose Clamps

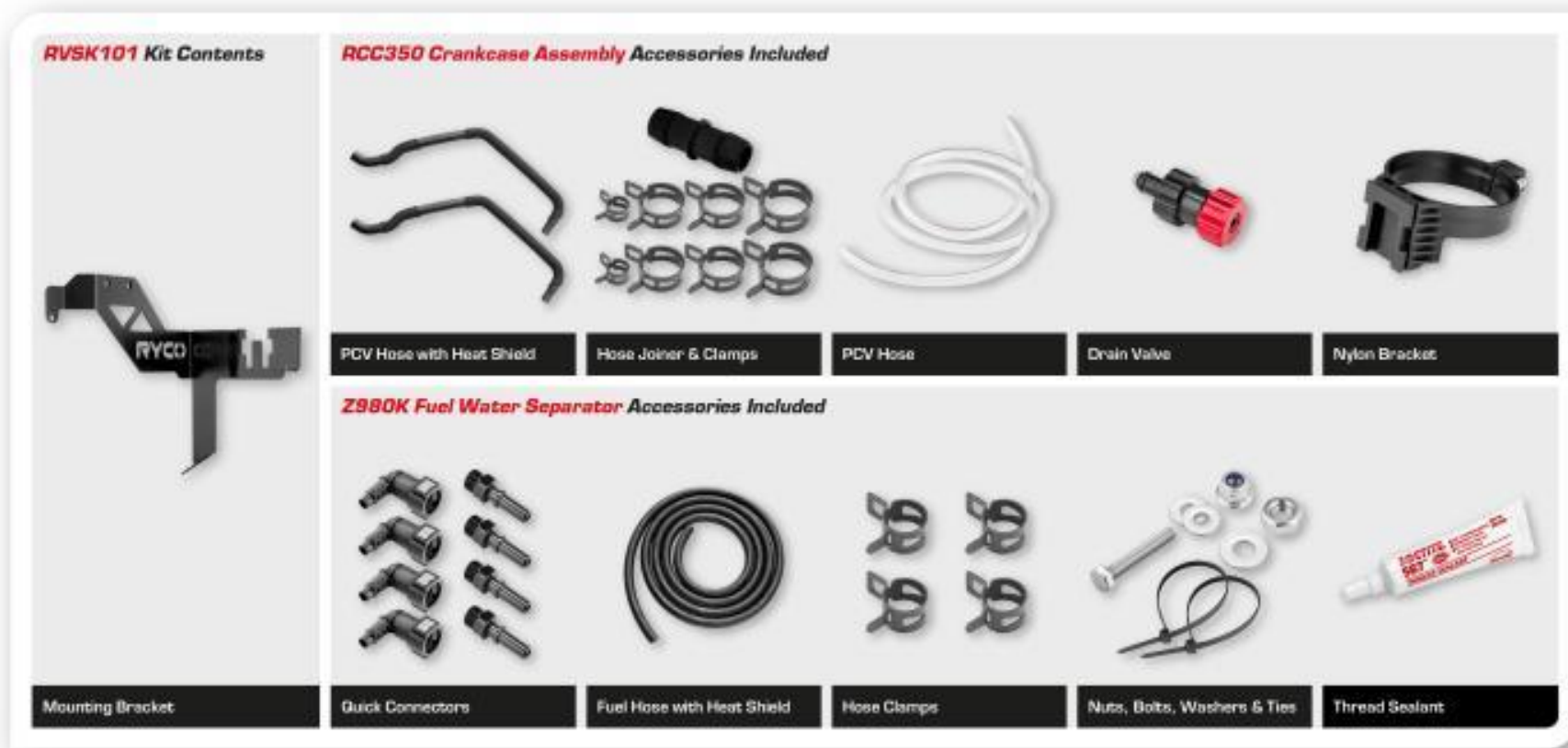
Nuts, Bolts, Washers & Ties

Thread Sealant

RVS100 COMPONENTS LIST



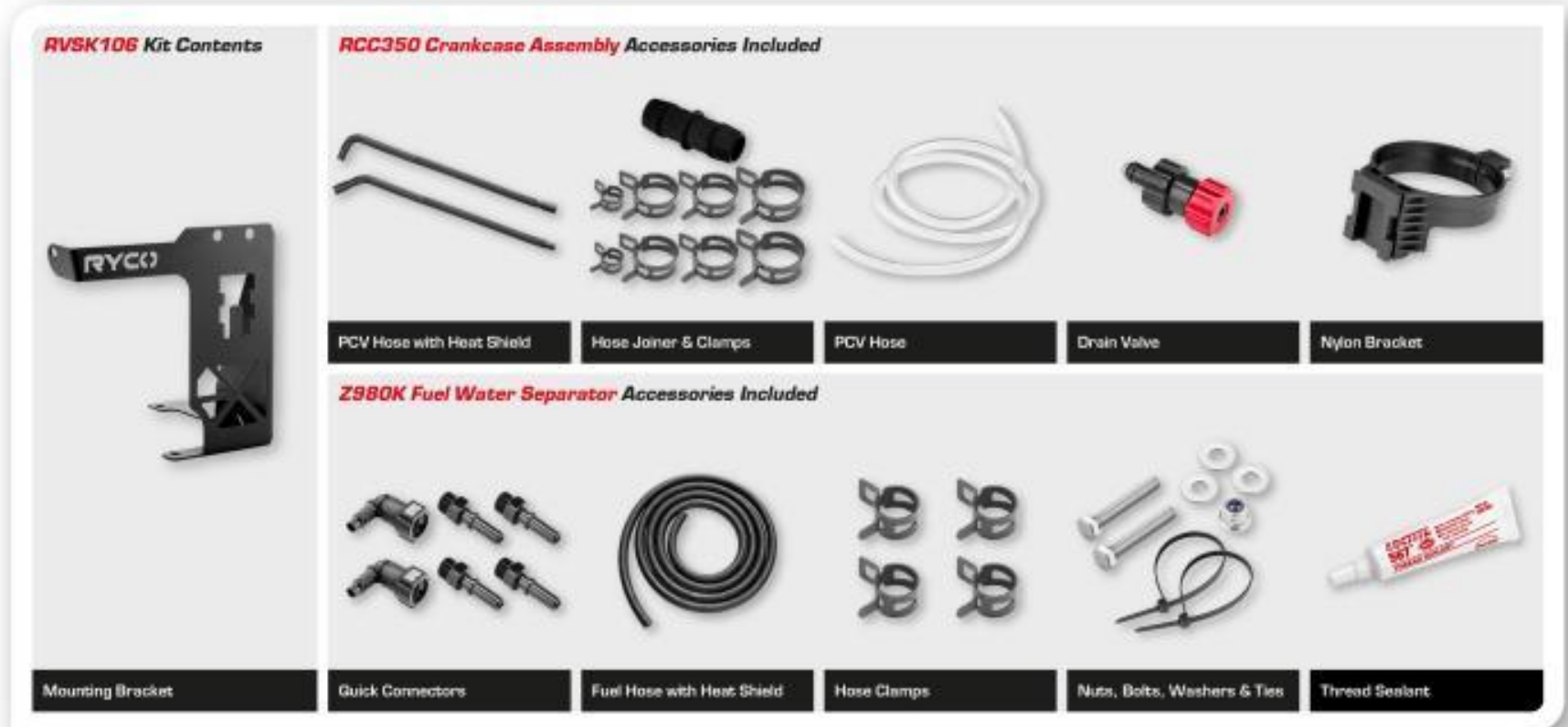
RVSK101
Ford Ranger PX, Everest and Mazda
BT-50, 2.2L-3.2L, 2011-2018



RVSK101 COMPONENTS LIST



RVSK106
Toyota Landcruiser VDJ 70 Series,
1VD-FTV, 2007-2018



RVSK106 COMPONENTS LIST

Filter Selection



RVS100



RCC350

Crankcase Assembly

+/-



Z980SK

Shorter version of Z980K
Fuel Water Separator



RVS101



RCC350

Crankcase Assembly

+/-



Z980K

Fuel Water Separator
120 litres per hour (10 micron)



RVS106



RCC350

Crankcase Assembly

+/-



Z980K

Fuel Water Separator
120 litres per hour (10 micron)

RVSK KIT AND FILTER SELECTION

Filters Sold Separately

RYCO KIT				
PD. #	Application	ENGINE	Date Range	Due date
RVSK112	Mitsubishi Pajero Sport & Triton MQ	4N15	2015 - 2018	Dec-19
RVSK102	Toyota Hilux & Fortuner GUN	1GD	2015 - 2018	Dec-19
5665	Mitsubishi Triton ML - MN	4D56	2008 - 2015	2020
RVSK111	Nissan Navara D23 / NP300	YS23DDTi	2015 - 2017	2020
RVSK105	Toyota Landcruiser VDJ200R	1VD-FTV	2007 - 2018	2020
RVSK108	Nissan Navara D40 (Spanish & Thai)	YD25DDTi	2005 - 2015	2020
RVSK104	Toyota Landcruiser Prado GDJ	1GD	2015 - On	2020
RVSK113	Holden Colorado RG & Trailblazer	LWH	2012 - 2018	2020
RVSK109	Isuzu D-MAX 3.0L	4JJITC	2012 - 2019	2020
5742	Jeep Wrangler JK	2.8L	2007 - 2018	2020
RVSK103	Toyota Landcruiser Prado KDJ	1KD	2013 - 2015	2020
5717	Toyota Landcruiser VDJ70 Series	1VD-FTV	2018 - On	2020
5682	Nissan Patrol GU	ZD30DDTi	2007-2017	2020
5683	Nissan Patrol GU	ZD30DDTi	2006-2017	2021
5666	Isuzu D-MAX	4JJ1TCX	2018 - On	2021
5716	Isuzu D-MAX	4JJITC	2019 - On	2021
RVSK107	Toyota Landcruiser Prado KDJ & KZJ	1KD/1KZ	2009 - 2013	2021
5673	Ford Ranger PK	WEAT	2007 - 2011	2021

RYCO KIT				
PD. #	Application	ENGINE	Date Range	Due date
5674	Mitsubishi Pajero	4M41	2008 - 2017	2021
RVSK110	VW Amarok	2.0L TDI	2011 - On	2021
5677	Toyota Landcruiser HDJ100 Series	1HD-FTE	2000 - 2007	2021
5678	Holden Colorado RA	4JJ1	2008 - 2012	2021
5680	Jeep Grand Cherokee WK	EXF	2011 - 2018	2021
5722	Mazda BT-50 DX	WEAT	2006 - 2011	2021
5717	Mitsubishi Triton ML	4M41T	2006 - 2009	2021
5738	Nissan Pathfinder R51	YD25DDTi	2006 - 2013	2022
5726	Holden Rodeo RC	4JJ1	2008 - On	2022
5737	Hyundai Santa Fe	D4HB	2012 - 2018	2022
5731	Nissan Patrol GU	TD42T	2006 - 2017	2022
5723	Mazda BT-50 DX	WLAT	2006 - 2011	2022
5721	Ford Ranger PK	WLAT	2006 - 2011	2022
5718	Mitsubishi Challenger PB/PC	4D56	2009 - 2015	2022
5739	Nissan Navara D40 STX550	V9X	2011 - 2015	2022
5740	VW Amarok V6	DDXC	2016 - 2019	2022
5741	Nissan Navara D22	YD25DDTi	2008 - 2015	2022

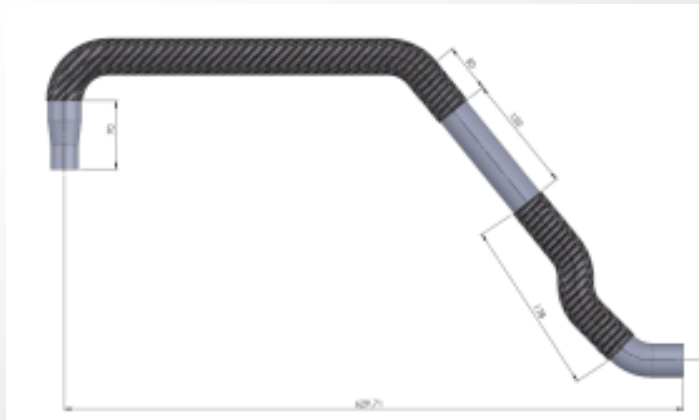
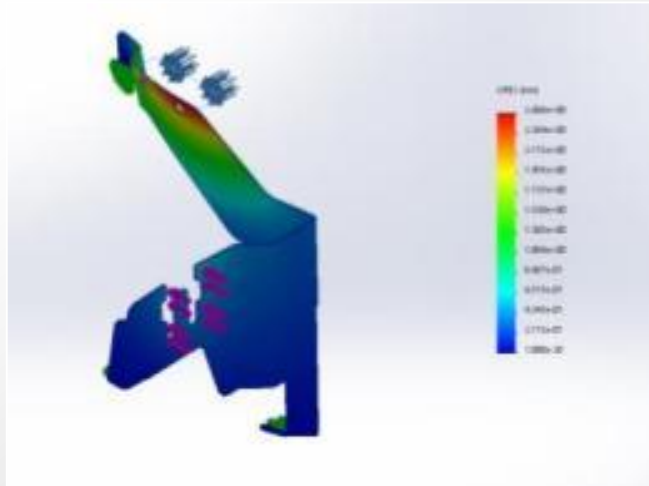
PRODUCT DEVELOPMENT LIST

Advanced 3D stress simulation software was used to test bracket durability. Real world testing involved a vehicle travelling across Australia fitted with a kit and multiple sensors to measure and monitor the live performance and durability in the real environment.

3D engine bay scanning allow the engineering team to find the right location to fit the bracket. Consideration was given to space, vibration, corrosion, ease of fitment and if the vehicle has a single or dual battery set up.

Conveniently our kits allow the end customer to decide whether they fit one or both filtration units to their vehicle. It also softens the cost required to purchase and fit one of our competitor solutions.

Components were selected with quality and simplicity in mind to give the OEM feel and look to our kits so they blend in the engine bay with all other genuine components.



DESIGN & ENGINEERING

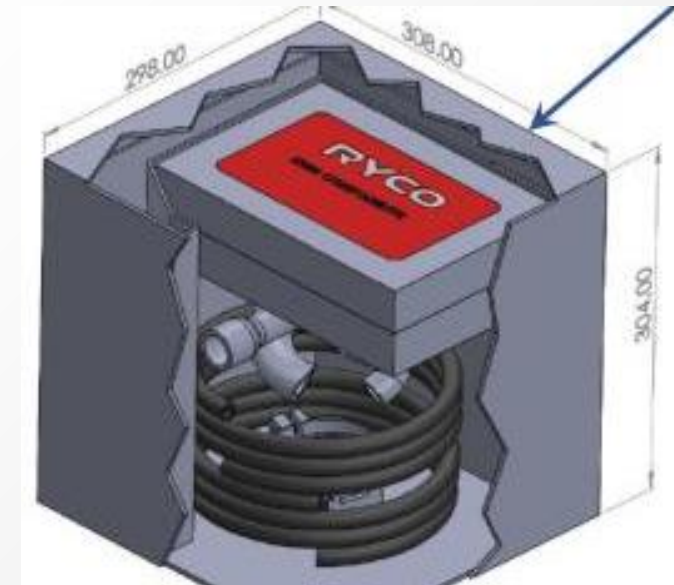


Double click image to activate Youtube

Full color dedicated part numbered boxes

2 inner boxes (one for RCC350 components and the other for F/W fitment)

Components packed and laid out properly to avoid movement and maintain the premium look



PACKAGING